

# NEWS Central

AUG 2019

Monthly newsletter from Central Electric Membership Corp.

## POINT OF VIEW

Building on a strong foundation

## GIVING BACK

Supporting our community

## CHOOSE CONVENIENCE

And get a \$10 bill credit!

## Board selects Oldham to lead Cooperative

The Central Electric Board of Directors is calling on Edward Oldham as the co-op's next Chief Executive Officer and General Manager. Oldham is taking the reins from Morris McClellion, who retired from the post after serving 16 years as the co-op's leader. Oldham's first official day as CEO and General Manager was July 6. McClellion will remain as a general advisor through Sept. 15 during the transition.

"Eddie is a perfect fit for this position due to his proven track record of leadership within the co-op and our community," said McClellion. "For the past several years, Eddie has been a primary catalyst behind strengthening the co-op's system and has been leadership-tested through storm restoration efforts following Hurricanes Matthew and Florence. The Board could not have selected a finer individual to guide this co-op into the future."

Oldham has been with Central since 1999, first serving as a



Edward Oldham [front center] has been selected by the Board of Directors as the new CEO and General Manager. Oldham replaces Morris McClellion, who retired from the co-op in July after 16 years of service as CEO.

Field Engineer before later being promoted to Assistant General Manager and Vice President of Operations and Engineering. He holds a B.S. in Electrical Engineering from NC State University, and is a licensed professional engineer.

"I am very honored and humbled to have been selected by the

Board as the new CEO and General Manager for this great organization," said Oldham. "I look forward to building on the strong history of our co-op and working closely with the Board and our excellent group of employees to continue providing the outstanding service our members deserve."

The final deadline for Bright Ideas grant applications is Sept. 23. However, all teachers who submit their applications by the early bird deadline of Aug. 15 will be entered into a drawing for one of five \$100 Visa gift cards. It pays to apply early so get those applications in!

# POINT OF VIEW

## Building on a strong foundation

From the desk of CEO & General Manager Edward Oldham

A few years back, a very wise person told me “the present shapes the future, but the future builds on the foundation of the past.” Not too long ago I sat down and really reflected on that statement, and I could not agree more.

Today, the cooperative and the electric utility industry as a whole is advancing and blazing forward at a pace that we have not seen in many years, if ever. Between the quickly emerging electric vehicle market and the shift to a “cleaner” and more renewable generation portfolio, just to name a few, the co-op is embracing these advancements and working hard on behalf of our members in order to shape a promising tomorrow.

However, the decisions that are being made today are also a product of the decisions that were made yesterday, and the day before that. A solid foundation has been built here at the co-op over the course

of many years. Between leadership, our fantastic group of employees and a very dedicated and hardworking Board of Directors, the co-op has positioned itself for a very successful future.

Projects such as our recent transmission line replacement emphasize our continued commitment to a reliable system to keep up with demands from our growing communities, like those brought on by electric vehicle adoption. The early adoption of advanced meters has allowed us to learn more about our system and the demands being placed on it. It has also dramatically improved our storm recovery efforts, allowing us to quickly pinpoint outages and create a more resilient system.

The metering system paired with services like outage texting and our free mobile app are providing members with more timely information and energy use data

“While much work has been done and continues to be done today, we look forward to tackling any future challenges head-on for you, our member-owners, and also for the greater good of the communities we live, work and play in.”



than we've ever been able to at any point in time.

While much work has been done and continues to be done today, we look forward to tackling any future challenges head-on for you, our member-owners, and also for the greater good of the communities we live, work and play in. And that's ultimately what the cooperative difference is all about, the coming together of people and ideas for the benefit of everyone.

Lastly, I would like to humbly thank our Board and members for the confidence and trust in me to lead this great organization, I am truly honored. I look forward to the challenges that lie ahead and embrace the call and opportunity to continue making a positive difference for our great communities here in central North Carolina.

Until next time,

*Edward Oldham*

# Operation Round Up<sup>®</sup> boosting local groups

Thanks to the Operation Round Up program, powered by voluntary donations from Central Electric members, over \$26,000 is being put back into the local communities to provide assistance for worthy projects. Grants were awarded to the following nonprofit organizations:

- ▶ **Chatham CARES Community Pharmacy** – \$2,000 to purchase medication to be provided free of charge to eligible residents.
- ▶ **Chatham Central High School PTSA-FBLA** – \$1,330 to attend and compete at the National Leadership Conference.
- ▶ **Chatham Council on Aging** – \$2,000 to provide a ramp and stairs from the porch to the sidewalk at the Pittsboro senior center.
- ▶ **Chatham Outreach Alliance** – \$2,000 to help support the SNACK! Program which provides meals to qualifying students while they are on summer break.
- ▶ **Community in Schools of Chatham County** – \$2,000 to

help fund the CIS Model program at BonLee School.

- ▶ **Faces of Chatham County** – \$1,330 to help pay for summer camps for children in need.
- ▶ **Family Promise of Lee County** – \$2,000 to cover the cost of fuel and maintenance for 15 passenger vans used to transport families in the program.
- ▶ **Helping Hand Clinic (Lee)** – \$2,000 to help replace the telephone system, computers and triage equipment in the clinic.
- ▶ **Johnsonville Community Center (Harnett)** – \$2,000 to help replace the roof at the center.
- ▶ **Lee County 4-H** – \$290 to purchase electric kits for summer camp participants.

- ▶ **Lee County High School Special Education Program** – \$2,000 to fund and promote the Occupational Training program.



- ▶ **Project Graduation 2019 (Chatham)** – \$2,000 to help provide entertainment for a safe graduation celebration for students.

- ▶ **Reach Out Crisis Pregnancy Center (Lee)** – \$2,000 for education, literature and resources for clients.
- ▶ **Southern Lee High School FFA** – \$2,000 to purchase feed, bedding and enrichment supplies for animals used in the program.
- ▶ **West Chatham Caring Community** – \$2,000 to help purchase supplies for the food pantry.



## Energy Efficiency Tip

When it's hot outside, your air conditioner needs all the help it can get. Open interior doors and vents to help air circulate and reduce the strain on your HVAC system. You can also close exterior doors and windows, as well as any blinds, shades or curtains, to help keep the heat of the day out and cooled air in. Also routinely replace or clean your air conditioner's filter. Replacing a dirty, clogged filter can reduce your air conditioner's energy consumption by 5 to 15 percent.

Source: [energy.gov](http://energy.gov)

# Co-op sends local students to basketball camp

Three local students recently participated in basketball camps at two of the state's largest college campuses, thanks to Central Electric's Touchstone Energy Sports Camp Scholarship program.

Jon Calderon of Pittsboro, and Landon Hill of Whispering Pines, both attended the Roy Williams Carolina Basketball Camp June 22-26 at the University of North Carolina in Chapel Hill.



Jon Calderon



Landon Hill

Kileigh Cameron of Whispering Pines, attended the Wolfpack Women's Basketball Camp at NC State University June 9-12 in Raleigh.

Campers stayed in dorms and experienced life as a college student, and also developed fundamental skills that will help them excel on and off the court. At both camps, coaches and student-athletes worked directly with campers to improve their basketball skills and practice working as a team.



Kileigh Cameron



Edward Oldham  
CEO & General Manager

## DIRECTORS

Rebecca G. Cogan, *President*  
Tommy Dalrymple, *Vice President*  
James B. Brooks, *Secretary-Treasurer*  
W. Phillip Thompson, *Asst. Secretary*  
Frank Comer III, Edith C. Cox,  
Dr. Nancy G. Holmes, Henry Outz,  
Tim Priest and Henry Randolph.

128 Wilson Road, P. O. Box 1107,  
Sanford, NC 27331

Office Hours: 8 a.m. - 5 p.m.

Phone: (919) 774-4900  
To report an outage  
24 hours a day: (877) 766-6769




James Taylor, *Editor*

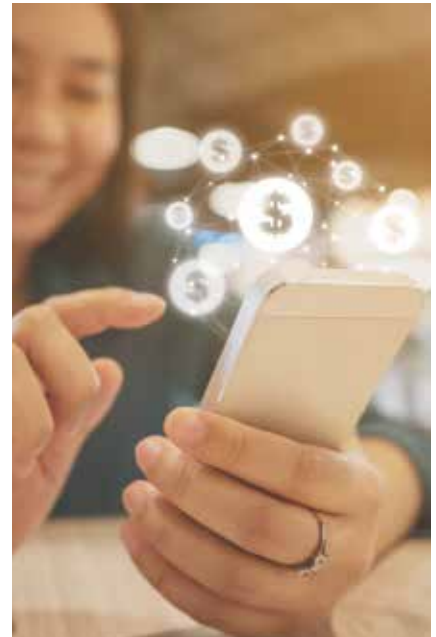
This institution is an equal  
opportunity provider and employer.

## Want a \$10 bill credit?

At Central Electric, we know our members like convenience. That's why we are continually looking for ways to help make managing your electric account more convenient.

For a limited time, members who choose to enroll in both the E-bill and Automatic Payment Draft programs will receive a one-time \$10 bill credit.

-  Enroll account in E-bill
-  Enroll account in Automatic Payment Draft
-  \$10 bill credit



Enroll in both e-bill and draft, look out for your \$10 credit on your billing statement, and then sit back and relax. It's as simple as that! Visit the "Member Services - Payment Options" section at [CEMCPower.com](http://CEMCPower.com) to enroll today!